



REFERENCE INFORMATION NOTE;

ATAKAŞ LİMAN A.Ş PORT ENTERPRISE Fire-Fighting Pump Station ,Pipelines and Hydrants Installation

Capacity : 7.894 m Pipeline 500 m³/h Pump Station ,Firefight Hydrants and Cabinets, (The Construction of Turnkey)

Date : 2018



Atakaş Port Side General Appearance



Atakaş Port Side General Appearance



Firefighting Raw Water Basin



Firefighting Raw Water Basin



Firefighting Diesel Pump Installation



Firefighting Pump Station Installation



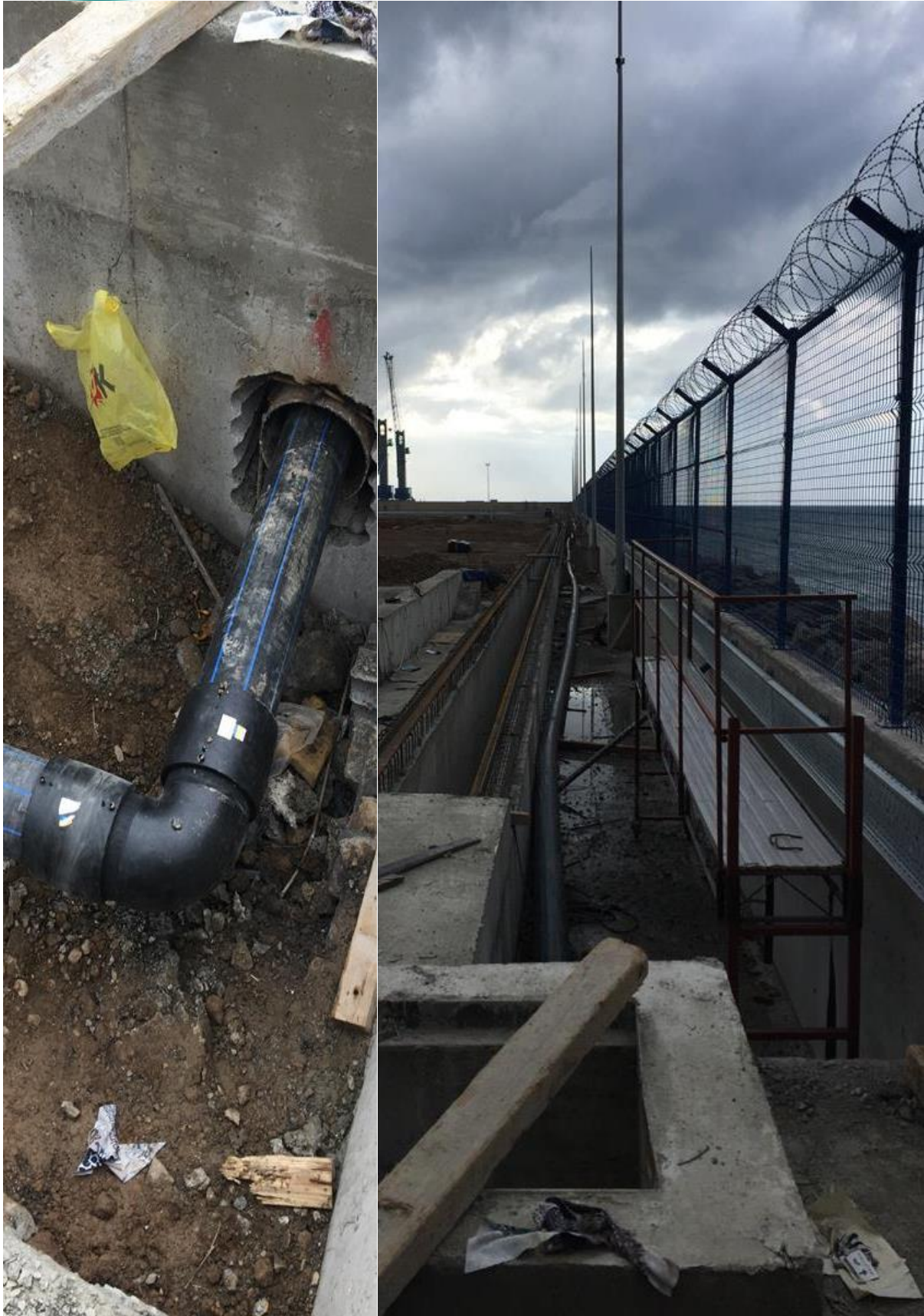
Firefighting Pump Station Installation



Firefighting Main Water Distribution Collector



Excavation , PE 100 Pipeline Intallation,Hydrant Installation



Excavation , PE100 Pipeline Intallation,Hydrant Installation



ST37 Carbon Steel, SS316 Stainless Steel Pipeline Intallation, Fire Cabinet and Hydrant Installation



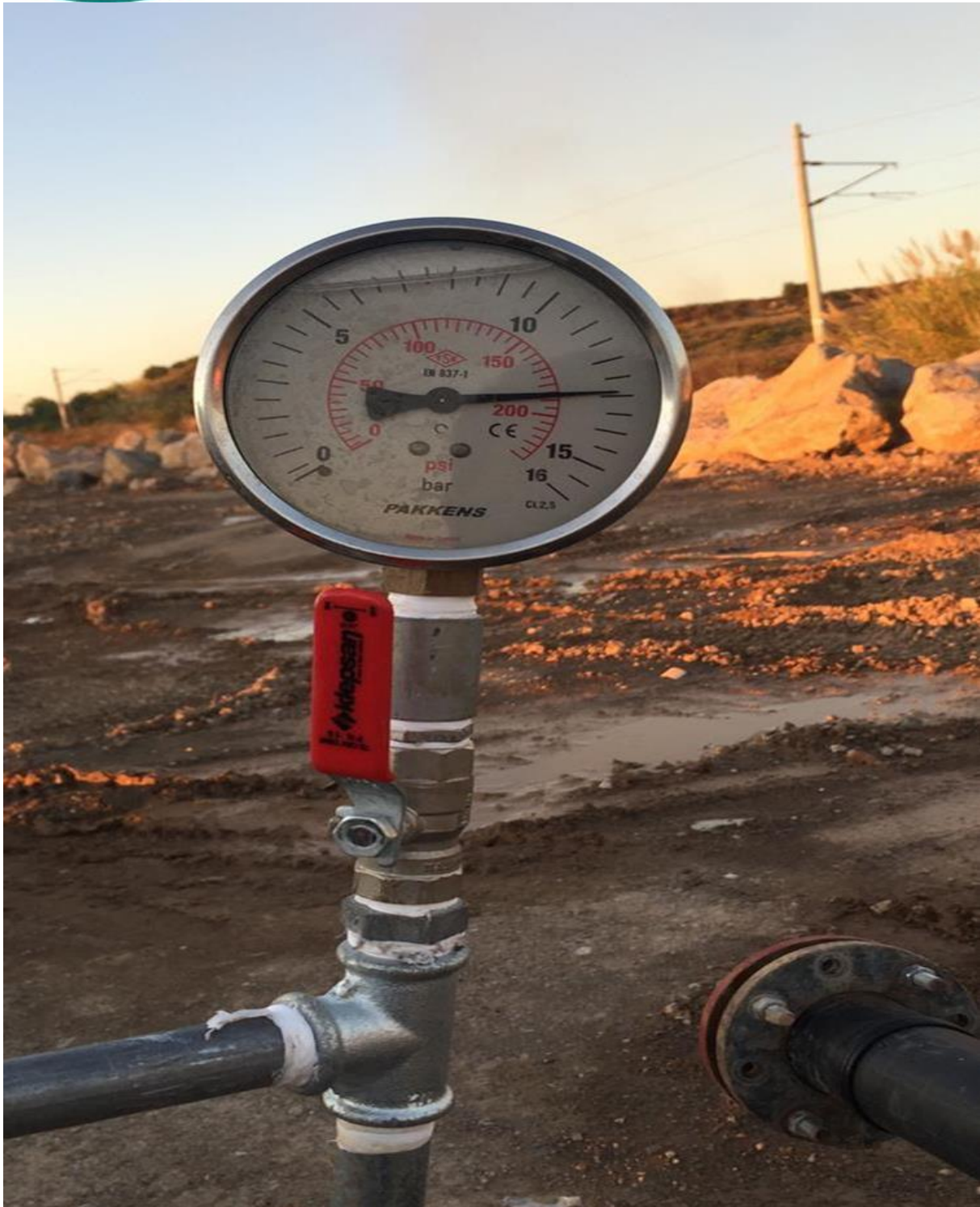
Firefight Hydrant and Fire Cabinet Installation



Firefight Hydrant and Fire Cabinet Installation



Port Side PE100 and SS316 Stainless Steel Pipeline , Firefight Hydrant and Fire Cabinet Installation



All Pipeline Hydrostatic Test

Best Regards
Kemal BOLAT
Project Manager
www.etrasu.com